

WHITE HORSE TEST REPORTS

DIMENSIONS AND SURFACE QUALITY	PORCELAIN TILES - GROUP BIa		PHYSICAL PROPERTIES	PORCELAIN TILES - GROUP BIa		CHEMICAL PROPERTIES	PORCELAIN TILES - GROUP BIa	
	ISO 13006 Standard	White Horse Tiles (Test Result By SIRIM)		ISO 13006 Standard	White Horse Tiles (Test Result By SIRIM)		ISO 13006 Standard	White Horse Tiles (Test Result By SIRIM)
Length and Width	±0.6% / ±2.0mm (Non-Rectified) ±0.3% / ±1.0mm (Rectified)	Passed	Water Absorption	Maximum 0.5%	Passed	Chemical Resistance To Household Chemical Of Glazed Tiles	Class GA(V): No visible effect Class GB(V): Definite change in appearance	No visible effect GA(V)
Thickness	±5% / ± 0.5mm	Passed	Breaking Strength	Not Less Than 1300N		Chemical Resistance To Swimming Pool Salts Of Glazed Tiles	Class GC(V): Partial or complete loss of the original surface Minimum Class GB(V)	
Straightness of Sides	±0.5% / ±15mm (Non-Rectified) ±0.3% / ±0.8mm (Rectified)	Passed	Modulus of Rupture	Minimum 35N/mm ²	Passed	Chemical Resistance To Hydrochloric Acid (3%) Of Glazed Tiles	Class GLA(V): No visible effect Class GLB(V): Definite change in appearance Class GLC(V): Partial or complete loss of the original surface	No visible effect GLA(V)
Rectangularity	±0.5% / ±2.0mm (Non-Rectified) ±0.3% / ±1.5mm (Rectified)	Passed	Resistance to Deep Abrasion of Unglazed Tiles	NIL		Chemical Resistance To Citric Acid (100g/l) Of Glazed Tiles	Class GLB(V): Definite change in appearance Class GLC(V): Partial or complete loss of the original surface	
Flatness of Surface	±0.5% / ±2.0mm (Non-Rectified) ±0.4% / ±1.8mm (Rectified)	Passed	Resistance to Surface Abrasion of Glazed Tiles	Class 3: For normal footwear with small amounts of scratching dirt. Class 4: For regular traffic with some scratching dirt	Class 3	Chemical Resistance To Potassium Hydroxide (30g/l) Of Glazed Tiles	Minimum Class 3	Passed
Centre Curvature								
Edge Curvature								
Warpage								
Surface Quality	A minimum of 95% free from visible defects	Passed	Crazing Resistance	No Crazing Observed		Staining Resistance Test Of Glazed Tiles	Minimum Class 3	

SHADE & TONALITIES

V1 UNIFORM FROM TILE TO TILE	V2 SLIGHTLY NOTICEABLE FROM TILE TO TILE	V3 MODERATELY NOTICEABLE FROM TILE TO TILE	V4 DISTINCTLY NOTICEABLE FROM TILE TO TILE
V1 Colour range and tonality within the same shade is fairly uniform from tile to tile. Minimal to zero difference among tiles from the same production run.	V2 Colour range and tonality within the same shade is slightly noticeable from tile to tile. Visibly distinguished difference in design or pattern with minimal change in colour tones.	V3 Colour range and tonality within the same shade is moderately noticeable from tile to tile. Visibly distinguished difference in design or pattern.	V4 Colour range and tonality within the same shade is distinctly noticeable from tile to tile. Random colour differences from tile to tile create the possibility of unique tile compositions.

- The accuracy of colours shown in this brochure is as close as the printing process will allow.
- The appearance of tiles featured in this brochure may differ from the actual items sold.
- The pictures are only illustrative of the tile combinations.
- All tiles are packed in accordance with the standard packing list. For special orders and custom sizes, tile products will be custom-packed based on quality and specification requested.
- White Horse Ceramic Industries Sdn. Bhd. reserves the right to amend the colour range or specifications of tiles at any time without notice.



WHITE HORSE
CERAMIC

WHITE HORSE CERAMIC INDUSTRIES SDN. BHD.
(Co. No. 216824-X)

PLO 464, Jln Gangsa, Zone 11, Pasir Gudang Industrial Estate, 81700 Pasir Gudang, Johor, Malaysia.

(607)253 5300

(607)251 8855

whcisb@whitehorse.com.my

www.whitehorse.com.my



Scan QR Code



DEC 2025
CHFS600001

*Ultimate Quality,
Timeless Design*

600X600MM

porcelain
stone tiles



WHITE HORSE
CERAMIC



ELCANTO SERIES

600mm x 600mm **M** Matt Finish, Glazed, **R** Rectified



NEW!



H60138 **M** **R** (16 Faces)



H60139 **M** **R** (16 Faces)



H60140 **M** **R** (16 Faces)



H60141 **M** **R** (16 Faces)

H60139

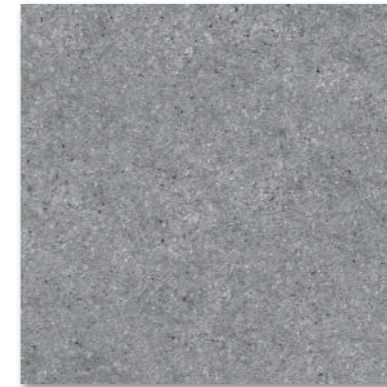
SIZE	CARTON			PALLET		
	pcs	m ²	kg	ctns	m ²	kg
600mm x 600mm	4	1.44	32.43	40	57.60	1,320.20



H60105

COSTIERO SERIES

600mm x 600mm **M** Matt Finish, Glazed, **R** Rectified



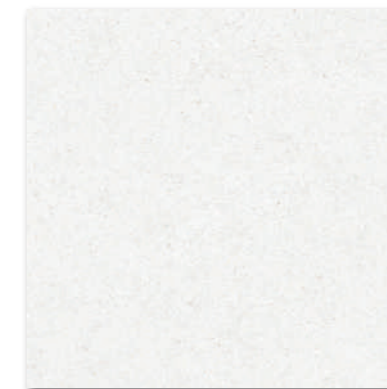
H60102 **M** **R**

(6 Faces)



H60105 **M** **R**

(6 Faces)



H60106 **M** **R**

(6 Faces)

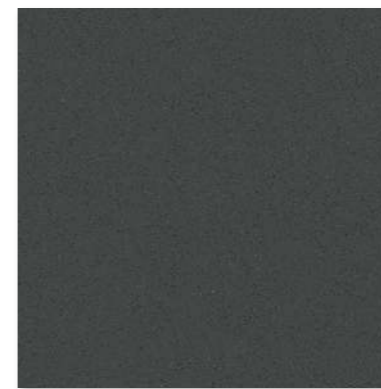
SIZE	CARTON			PALLET		
	pcs	m ²	kg	ctns	m ²	kg
600mm x 600mm	4	1,44	32,43	40	57,60	1,320,20



H60101

NOVELA SERIES

600mm x 600mm **M** Matt Finish, Glazed, **R** Rectified



H60098 **M** **R**

(1 Face)



H60101 **M** **R**

(1 Face)

SIZE	CARTON			PALLET		
	pcs	m ²	kg	ctns	m ²	kg
600mm x 600mm	4	1.44	32.43	40	57.60	1,320.20



MONTES SERIES

600mm x 600mm **M** Matt Finish, Glazed, **R** Rectified

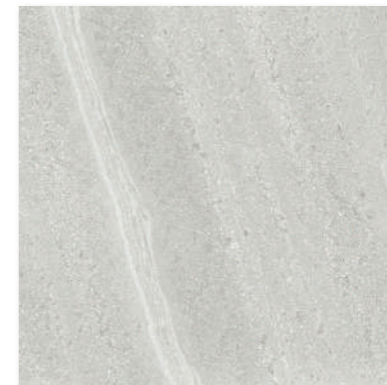


NEW!



H60092 **M** **R**

(12 Faces)



H60093 **M** **R**

(12 Faces)



H60094 **M** **R**

(12 Faces)

H60093

SIZE	CARTON			PALLET		
	pcs	m ²	kg	ctns	m ²	kg
600mm x 600mm	4	1.44	32.43	40	57.60	1,320.20



H60089

SILTSTONE SERIES

600mm x 600mm **M** Matt Finish, Glazed, **R** Rectified



H60089 **M** **R**

(6 Faces)

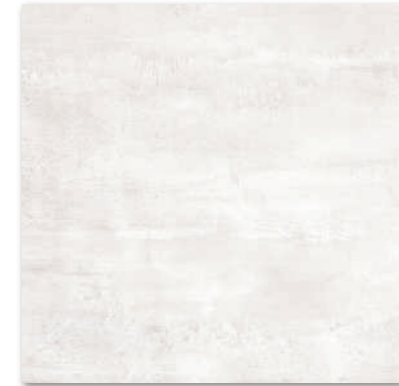
SIZE	CARTON			PALLET		
	pcs	m ²	kg	ctns	m ²	kg
600mm x 600mm	4	1.44	32.43	40	57.60	1,320.20



H60088

BIANCO SERIES

600mm x 600mm **M** Matt Finish, Glazed, **R** Rectified **PO** Phased Out Item, While stock last



H60088 **M** **R** **PO** (6 Faces)

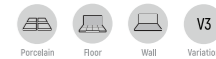
SIZE	CARTON			PALLET		
	pcs	m ²	kg	ctns	m ²	kg
600mm x 600mm	4	1.44	32.43	40	57.60	1,320.20



H60074

FILO SERIES

300mm x 600mm, 600mm x 600mm **M** Matt Finish, Glazed, **R** Rectified



H60074 **M** **R** (6 Faces)
600x600mm



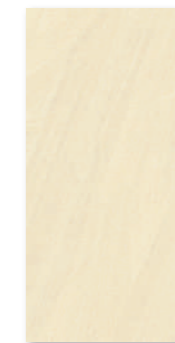
H60076 **M** **R** (6 Faces)
600x600mm



H63076 **M** (8 Faces)
300x600mm



H60077 **M** **R** (6 Faces)
600x600mm



H63077 **M** (8 Faces)
300x600mm

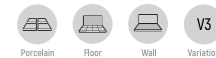
SIZE	CARTON			PALLET		
	pcs	m ²	kg	ctns	m ²	kg
600mm x 600mm	4	1,44	32,43	40	57,60	1,320,20
300mm x 600mm	8	1,44	29,40	72	103,68	2,139,80



H60048

CEMENTO SERIES

300mm x 600mm, 600mm x 600mm **M** Matt Finish, Glazed, **R** Rectified



H60048 **M** **R**

(4 Faces)

SIZE	CARTON			PALLET		
	pcs	m ²	kg	ctns	m ²	kg
600mm x 600mm	4	1.44	32.43	40	57.60	1,320.20
300mm x 600mm	8	1.44	29.40	72	103.68	2,139.80



H60043

FINO SERIES

600mm x 600mm **M** Matt Finish, Glazed, **R** Rectified



NEW!



H60042 **M** **R**

(12 Faces)



H60043 **M** **R**

(12 Faces)



H60044 **M** **R**

(12 Faces)

SIZE	CARTON			PALLET		
	pcs	m ²	kg	ctns	m ²	kg
600mm x 600mm	4	1.44	32.43	40	57.60	1,320.20



H66004

ROSATO SERIES

150mm x 300mm, 150mm x 600mm, 600mm x 600mm **M** Matt Finish, Glazed, **R** Rectified



H66001 **M** **R**

(1 Face)



H66004 **M** **R**

(1 Face)

SIZE	CARTON			PALLET		
	pcs	m ²	kg	ctns	m ²	kg
600mm x 600mm	4	1.44	32.43	40	57.60	1,320.20
150mm x 600mm	8	0.72	15.74	80	57.60	1,282.20
150mm x 300mm	16	0.72	15.74	90	64.80	1,439.60



HD66001

LOOS SERIES

180mm x 600mm, 600mm x 600mm **M** Matt Finish, Glazed, **R** Rectified

PO Phased Out Item, While stock last



HD66001 **M** **R** **PO** (6 Faces)



HD66004 **M** **R** **PO** (6 Faces)

SIZE	CARTON			PALLET		
	pcs	m ²	kg	ctns	m ²	kg
600mm x 600mm	4	1.4400	32.68	40	57.60	1,330.20
180mm x 600mm	8	0.8640	20.09	80	69.12	1,630.20