

WHITE HORSE TEST REPORTS

DIMENSIONS AND SURFACE QUALITY	CERAMIC WALL TILES - GROUP BIII		PHYSICAL PROPERTIES	CERAMIC WALL TILES - GROUP BIII		CHEMICAL PROPERTIES	CERAMIC WALL TILES - GROUP BIII	
	ISO 13006 Standard	White Horse Tiles (Test Result By SIRIM)		ISO 13006 Standard	White Horse Tiles (Test Result By SIRIM)		ISO 13006 Standard	White Horse Tiles (Test Result By SIRIM)
Length and Width	± 0.5% / ± 2.0mm	Passed	Water Absorption	E > 10%	Average 12.8% Individual Maximum 13.8%	Chemical Resistance To Household Chemical Of Glazed Tiles	Minimum GB	No Visible Effect (GA)
Thickness	± 1.0% / ± 0.5mm	Passed	Breaking Strength	Not Less Than 600N	Average 990N	Chemical Resistance To Swimming Pool Salts Of Glazed Tiles	Minimum GB	No Visible Effect (GA)
Straightness of Sides	± 0.3% / ± 1.5mm	Passed	Modulus of Rupture	Minimum 12N/mm ²	Average 32N/mm ² Individual Minimum 30N/mm ²	Chemical Resistance To Hydrochloric Acid (3%) Of Glazed Tiles	GLA: No Visible Effect	GLA - GLB
Rectangularity	± 0.5% / ± 2.0mm	Passed	Resistance to Deep Abrasion Of Unglazed Tiles	N/A	N/A	Chemical Resistance To Citric Acid (100g/l) Of Glazed Tiles	GLB: Definite Change In Appearance	GLA - GLB
Flatness of Surface	+ 0.5% - 2.0mm	Passed	Resistance to Surface Abrasion Of Glazed Tiles	Class 1: Soft-Soled Footwear Without Scratching Dirt	Class 3	Chemical Resistance To Potassium Hydroxide (30g/l) Of Glazed Tiles	GLC: Partial Or Complete Loss Of The Original Surface	GLA - GLB
Centre Curvature	- 0.3% - 1.5mm			Class 2: Soft-Soled Footwear With Small Amounts Scratching Dirt				
Edge Curvature	+ 0.5% - 2.0mm - 0.3% - 1.5mm	Class 3: Normal Footwear With Small Amounts Scratching Dirt						
Warpage	± 0.5% / ± 2.0mm	Passed	Crazing Resistance	No Crazing Observed	Passed	Staining Resistance Test Of Glazed Tiles	Minimum Requirement GLB	Minimum Class 3
Surface Quality	A minimum of 95% free from visible defects	Passed						Passed

SHADE & TONALITIES

V1 UNIFORM FROM TILE TO TILE	V2 SLIGHTLY NOTICEABLE FROM TILE TO TILE	V3 MODERATELY NOTICEABLE FROM TILE TO TILE	V4 DISTINCTLY NOTICEABLE FROM TILE TO TILE
<p>V1 Colour range and tonality within the same shade is fairly uniform from tile to tile. Minimal to zero difference among tiles from the same production run.</p>	<p>V2 Colour range and tonality within the same shade is slightly noticeable from tile to tile. Visibly distinguished difference in designer patterns with minimal change in colour tones.</p>	<p>V3 Colour range and tonality within the same shade is moderately noticeable from tile to tile. Visibly distinguished difference in design or pattern.</p>	<p>V4 Colour range and tonality within the same shade is distinctly noticeable from tile to tile. Random colour differences from tile to tile create the possibility of unique tile compositions.</p>



WHITE HORSE CERAMIC

WHITE HORSE CERAMIC INDUSTRIES SDN. BHD.
(Co. No. 216824-X)

📍 PLO 464, Jln Gangsa, Zone 11, Pasir Gudang Industrial Estate, 81700 Pasir Gudang, Johor, Malaysia.

☎ (607)253 5300

☎ (607)251 8855

✉ whcisb@whitehorse.com.my

🌐 www.whitehorse.com.my



Scan QR Code



JAN 2024
CLCW6530001

WALL Ceramic Tiles

300x600mm



*Ultimate Quality,
Timeless Design*



WHITE HORSE CERAMIC



W63025

STATUARIO SERIES

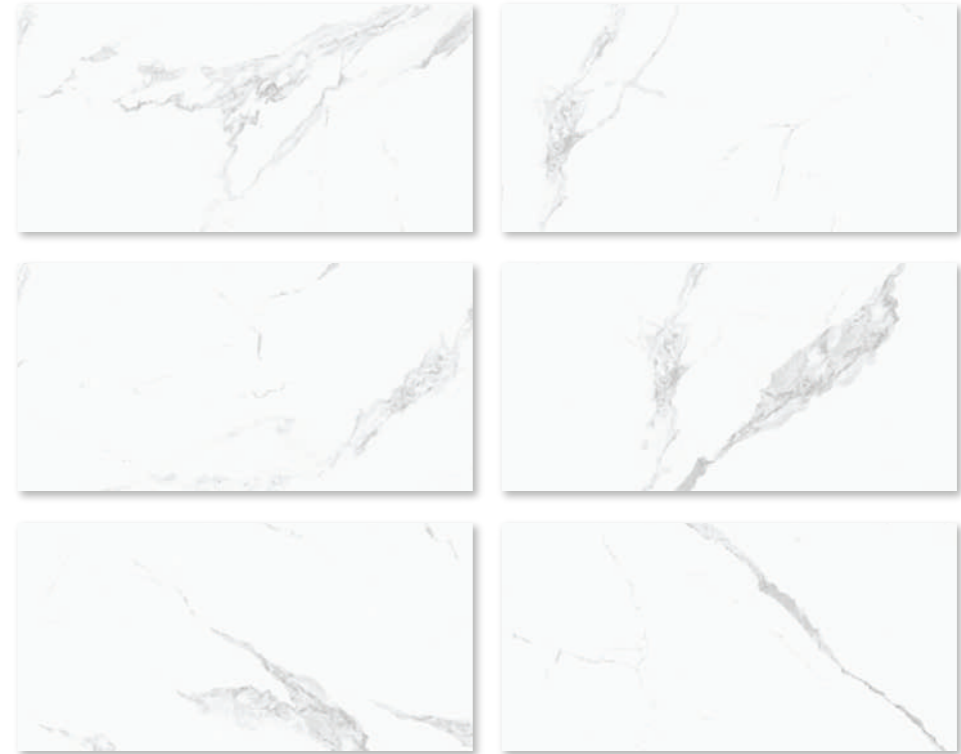
Wall Tiles 300mm x 600mm  Gloss Finish, Glazed



Ceramic

Wall

Variation



W63025  (20 designs)

SIZE	CARTON			PALLET		
	pcs	m ²	kg	ctns	m ²	kg
300mm x 600mm(W63)	8	1.44	23.78	60	86.40	1,449.80



W63026

MONTES SERIES

Wall Tiles 300mm x 600mm **G** Gloss Finish, Glazed



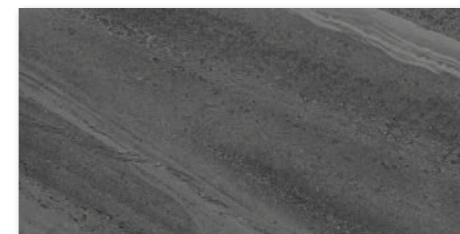
NEW!



W63023 **G** (6 designs)



W63024 **G** (6 designs)



W63026 **G** (6 designs)

SIZE	CARTON			PALLET		
	pcs	m ²	kg	ctns	m ²	kg
300mm x 600mm(W63)	8	1.44	23.78	60	86.40	1,449.80



W63018S

ANTICO SERIES

Wall Tiles 300mm x 600mm  Gloss Finish, Glazed



Ceramic

Wall

Variation



W63018S 




SIZE	CARTON			PALLET		
	pcs	m ²	kg	ctns	m ²	kg
300mm x 600mm(W63)	8	1.44	23.78	60	86.40	1,449.80

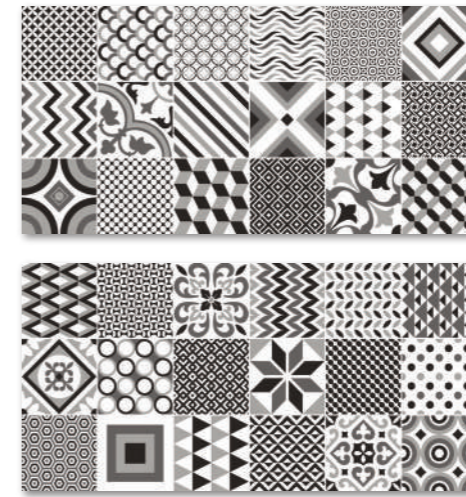


W63017S

ESTETICO SERIES

Wall Tiles 300mm x 600mm  Gloss Finish, Glazed

-  Ceramic
-  Wall
-  V2
Variation



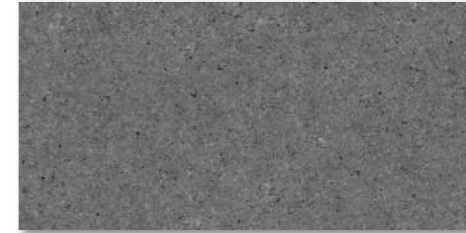
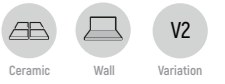
W63017S 

SIZE	CARTON			PALLET		
	pcs	m ²	kg	ctns	m ²	kg
300mm x 600mm(W63)	8	1.44	23.78	60	86.40	1,449.80



COSTIERO SERIES

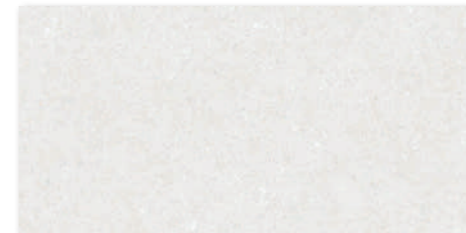
Wall Tiles 300mm x 600mm **G** Gloss Finish, Glazed



W63017 **G**



W63019 **G**



W63020 **G**

W63017 W63019

SIZE	CARTON			PALLET		
	pcs	m ²	kg	ctns	m ²	kg
300mm x 600mm(W63)	8	1.44	23.78	60	86.40	1,449.80



W63014 W63014S

CARRARA SERIES

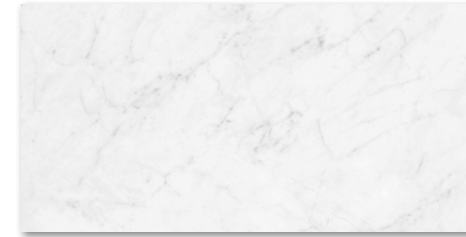
Wall Tiles 300mm x 600mm  Gloss Finish, Glazed



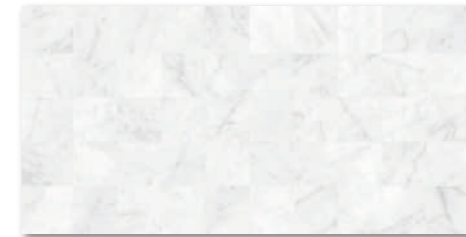
Ceramic

Wall

Variation



W63014 



W63014S 

SIZE	CARTON			PALLET		
	pcs	m ²	kg	ctns	m ²	kg
300mm x 600mm(W63)	8	1.44	23.78	60	86.40	1,449.80



W63009 W63009S

RUTA SERIES

Wall Tiles 300mm x 600mm **G** Gloss Finish, Glazed **PO** Phased Out Item While Stock Last



Ceramic

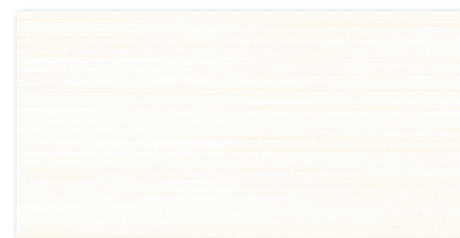


Wall

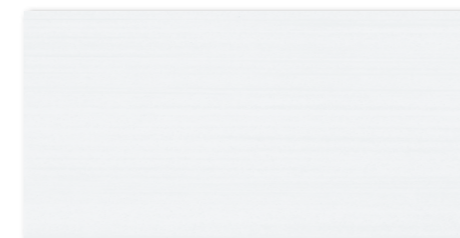


V2

Variation



W63008 **G**



W63009 **G**



W63008S **G**

PO



W63009S **G**

PO

SIZE	CARTON			PALLET		
	pcs	m ²	kg	ctns	m ²	kg
300mm x 600mm(W63)	8	1.44	23.78	60	86.40	1,449.80



ONDA SERIES

Wall Tiles 300mm x 600mm  Gloss Finish, Glazed



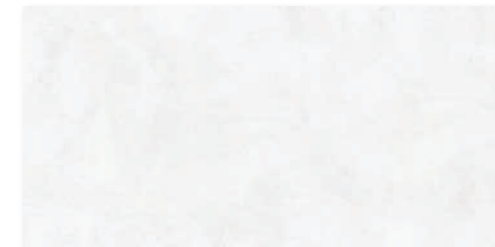
Ceramic



Wall



Variation



W63007 

SIZE	CARTON			PALLET		
	pcs	m ²	kg	ctns	m ²	kg
300mm x 600mm(W63)	8	1.44	23.78	60	86.40	1,449.80



W63005

GARUA SERIES

Wall Tiles 300mm x 600mm **G** Gloss Finish, Glazed



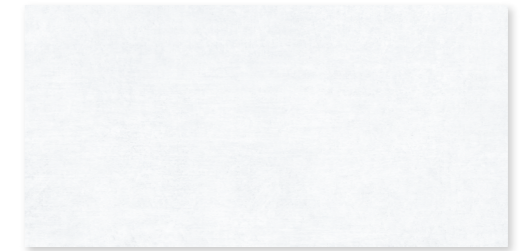
Ceramic

Wall

Variation



W63004 **G**



W63005 **G**

SIZE	CARTON			PALLET		
	pcs	m ²	kg	ctns	m ²	kg
300mm x 600mm(W63)	8	1.44	23.78	60	86.40	1,449.80



CREMA SERIES

Wall Tiles 300mm x 600mm  Gloss Finish, Glazed

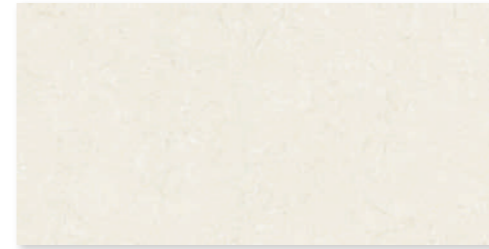


V2

Ceramic

Wall

Variation



W63002 



W63003 



W63002S 



W63003S 

W63003 W63003S

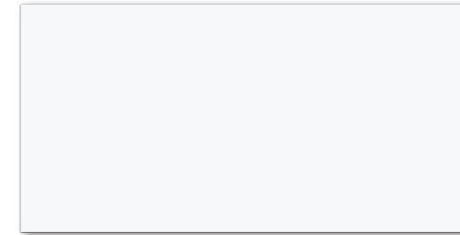
SIZE	CARTON			PALLET		
	pcs	m ²	kg	ctns	m ²	kg
300mm x 600mm(W63)	8	1.44	23.78	60	86.40	1,449.80



W63000 W63000S

NORMAL SERIES

Wall Tiles 300mm x 600mm **G** Gloss Finish, Glazed **PO** Phased Out Item While Stock Last



W63000 **G**

MARMETTE SERIES

Wall Tiles 300mm x 600mm **G** Gloss Finish, Glazed



W63000S **G**



W63001S **G** **PO**

SIZE	CARTON			PALLET		
	pcs	m ²	kg	ctns	m ²	kg
300mm x 600mm(W63)	8	1.44	23.78	60	86.40	1,449.80